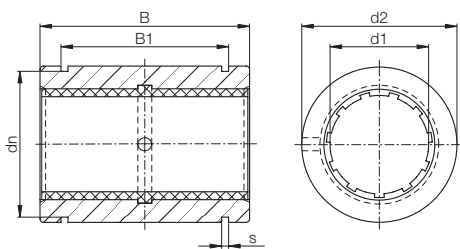


02439

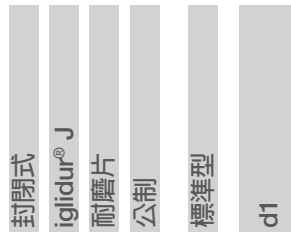
產品代碼



類型

尺寸

R J U M-01-10



● 由卡簧固定



78) 根據 igus® 測試方法 ▶ 頁碼 1038

81) $\varnothing < 10\text{mm}$ 時, 請使用 iglidur® JSM 套筒軸承

82) 設計品標準 ▶ 頁碼 980

請注意: 安裝說明 ▶ 頁碼 981

尺寸 [mm]

d1	d2	B	B1	s	dn	產品型號
	h7	h10	H10	H10	h10	
5	12	22	14.2	1.10	11.5	RJZM-01-05 ⁸¹⁾
6	12	22	14.2	1.10	11.5	RJZM-01-06 ⁸¹⁾
8	16	25	16.2	1.10	15.2	RJZM-01-08 ⁸¹⁾
10	19	29	21.6	1.30	17.5	RJUM-01-10
12	22	32	22.6	1.30	20.5	RJUM-01-12
16	26	36	24.6	1.30	24.2	RJUM-01-16
20	32	45	31.2	1.60	29.6	RJUM-01-20
25	40	58	43.7	1.85	36.5	RJUM-01-25
30	47	68	51.7	1.85	43.5	RJUM-01-30
40	62	80	60.3	2.15	57.8	RJUM-01-40
50	75	100	77.3	2.65	70.5	RJUM-01-50
60	90	125	101.7	3.15	86.5	RJUM-01-60

技術數據

產品型號	d1-公差 ⁷⁸⁾	F 最大值 動態 ⁸²⁾	F 最大值 靜態 ⁸²⁾	重量
		p = 5 MPa	p = 35 MPa	
	[mm]	[N]	[N]	
RJZM-01-05 ⁸¹⁾	+0.025 +0.060	525	3,675	5
RJZM-01-06 ⁸¹⁾	+0.025 +0.060	525	3,675	5
RJZM-01-08 ⁸¹⁾	+0.032 +0.070	960	6,720	9
RJUM-01-10	+0.030 +0.088	725	5,075	14
RJUM-01-12	+0.030 +0.088	960	6,720	21
RJUM-01-16	+0.030 +0.088	1,440	10,080	28
RJUM-01-20	+0.030 +0.091	2,250	15,750	49
RJUM-01-25	+0.030 +0.091	3,625	25,375	108
RJUM-01-30	+0.040 +0.110	5,100	35,700	162
RJUM-01-40	+0.040 +0.115	8,000	56,000	334
RJUM-01-50	+0.050 +0.130	9,000	87,500	579
RJUM-01-60	+0.050 +0.140	12,000	120,000	1,070